

LEGEND

- 4" METAL STUDS @16" O.C.
- 5/8" G.W.B
- TYP X FIRE RATED -1-HOUR (5/8")

- LIGHT SWITCH
- CMU WALL
- FRESH AIR VENT

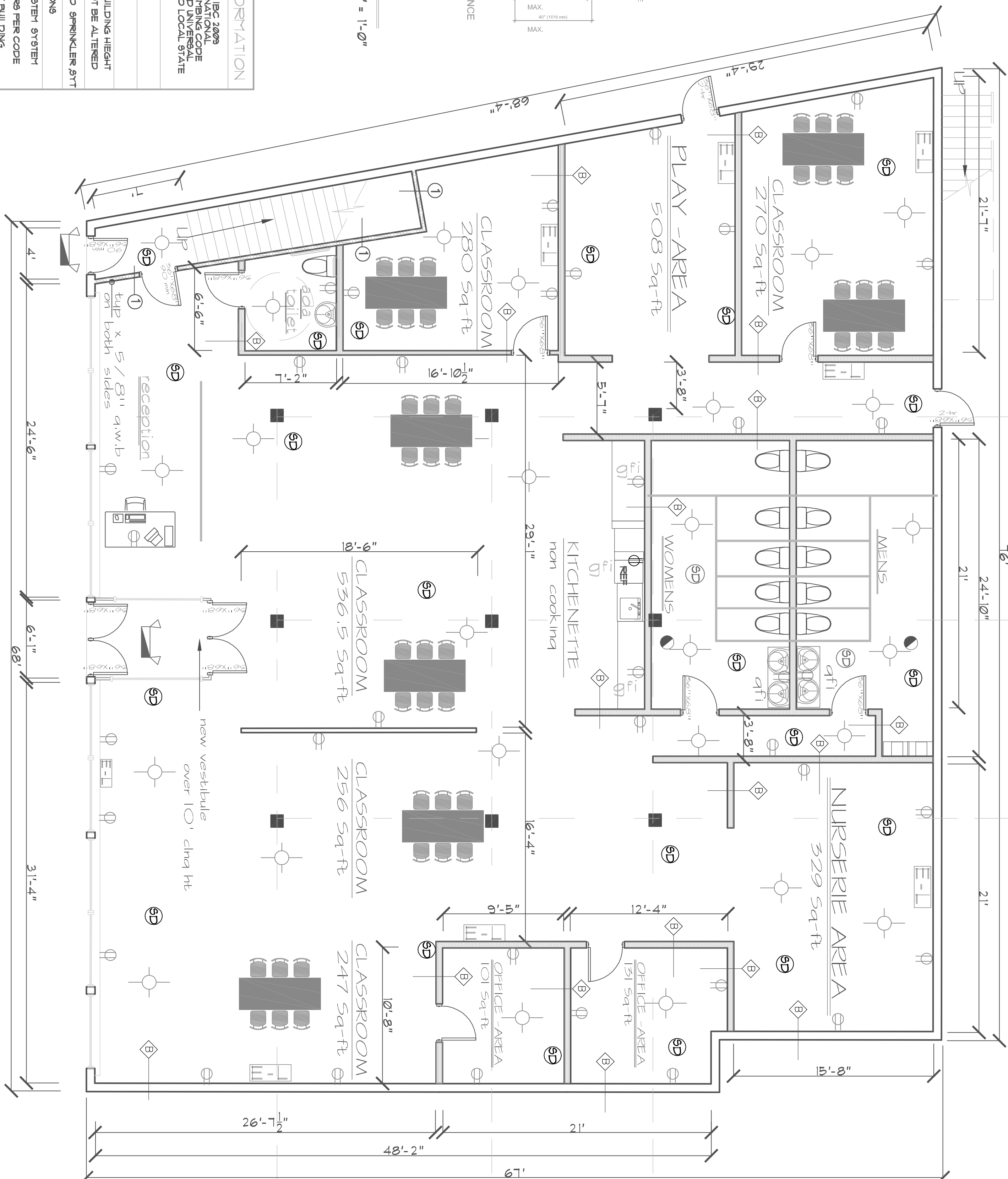
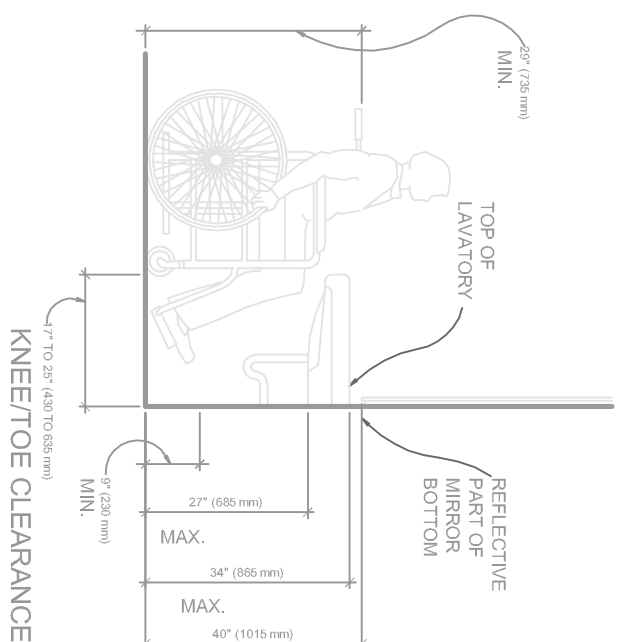
- EMERGENCY LIGHTS
- HARD WIRED SMOKE DET
- WINDOW
- HEADER HT.
- SILL HEIGHT

CODE COMPLIANCE INFORMATION

ALL CONSTRUCTION TO COMPLY WITH IBC 2009 INTERNATIONAL BUILDING CODE, IBC 2009 ELECTRICAL CODE, PHILADELPHIA PLUMBING CODE, PHILADELPHIA MECHANICAL CODE AND UNIVERSAL DEPT. STANDARDS AND LOCAL STATE DEPT. STANDARDS

USE GROUP	I-2
CONSTRUCTION TYPE	3-B
TABLE 603 ALLOWABLE AREA AND BUILDING HEIGHT EXISTING HEIGHT OF BUILDING WILL NOT BE ALTERED	
BUILDING WILL HAVE NFPA APPROVED SPRINKLER ST	
OCCUPANT LOAD	260 PERSONS
BUILDING WILL HAVE NEW FIRE ALARM SYSTEM SYSTEM FALL STATION STROBE AND CO DETECTOR PER CODE	
NEW PLUMBING AND HVAC THROUGH OUT BUILDING	
ZONING	C-2 / 7892 80-FT TOTAL LAND AREA

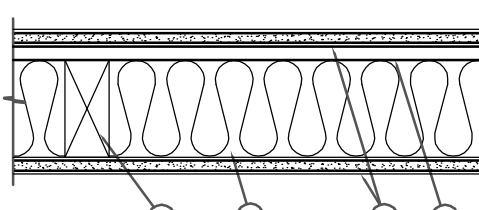
ADA REQUIREMENTS
SCALE: 1/4" = 1'-0"



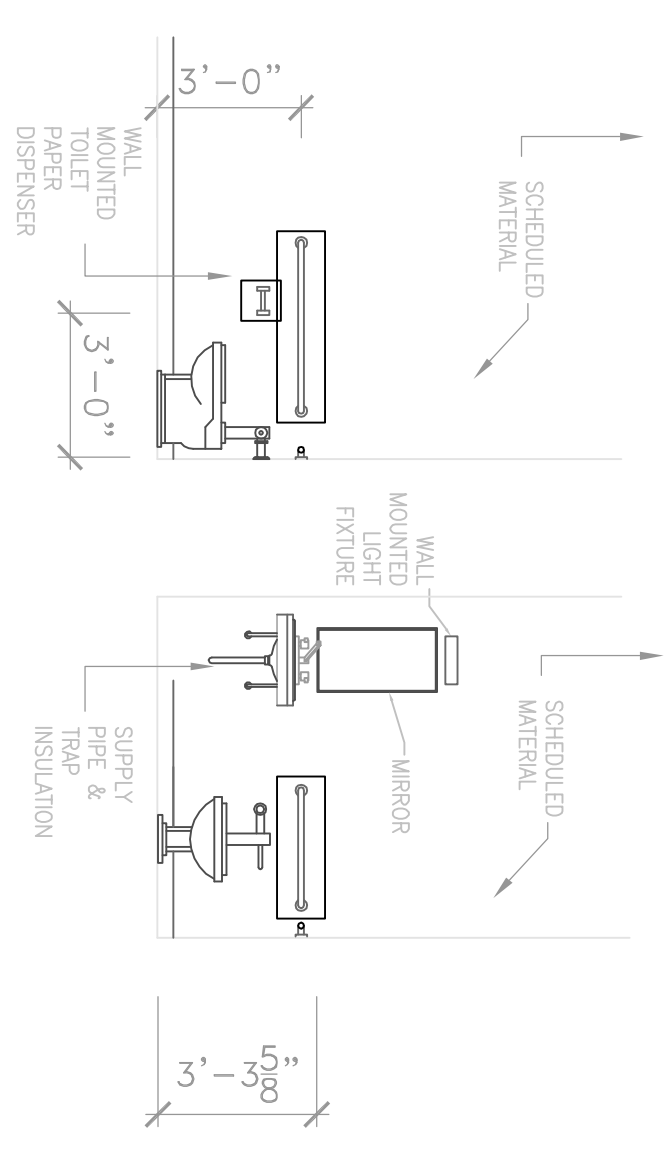
UNDERSIDE OF STRUCTURE
 METAL STUD BRACING ALTERNATE DIRECTION @ 4'-0" O.C. (TYP.)
 METAL STUD FRAMING @ 16" O.C. (SEE PLANS FOR SIZE)
 FINISH CEILING WHERE OCCURS (SEE SCHED.)
 5/8" GWB EACH SIDE WALL BASE (SEE SCHEDULE)
 FINISH FLOOR (SEE SCHED.)

METAL STUD PARTITION (GWB EACH SIDE (ONE -HOUR) SCALE: 1 1/2" = 1'-0")

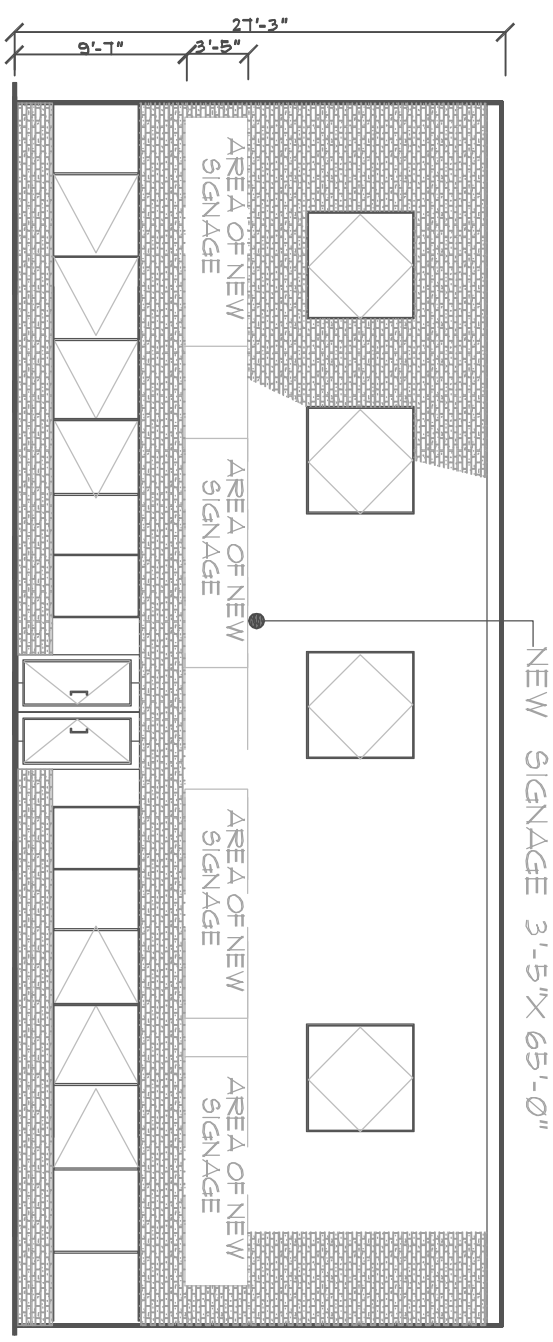
- Wood Studs 1 Nominal 2 by 4 in. spaced 16 in. OC effectively firestopped.
 - Gypsum Board 1/2" and Classified for Fire Resistance 5/8 in. thick wallboard applied horizontally or vertically with covered edge square on opposite side of wall.
 - When used in widths other than 48 in., gypsum board to be installed horizontally.
 - See Gypsum Board (GWB) Category for names of manufacturers.
 - 2 1/2" x 4" x 1/2" metal studs spaced 16 in. OC vertically, inner layers fastened to framing with 1/4 in. long Type W coarse thread galvanized steel screws spaced a max 8 in. OC, with last screw 1 in. from edge of board. When used in widths other than 48 in., gypsum board to be installed horizontally. All joints in face layers staggered with joints in base layer. Joints of each base layer offset with joints of base layer on opposite side.
- Fire Resistance Rating - ANSUL 263
 See General Information for Fire Resistance Ratings - ANSUL 263
 Design No. 1032
 August 21, 2008
 Bearing Wall Rating - 1 Hr.
 Nonbearing Wall Rating - 2 Hr.
 Finish Rating - 2 1/2 Hr.
 Load Restriction for Canadian Applications - See Guide EX-17
 2B. Gypsum Board - (As an alternate to items 2, and 2A) - 5/8 in. thick gypsum panels, with square edges, applied either horizontally or vertically with covered edge square on opposite side of wall. When used in widths other than 48 in., gypsum board to be installed horizontally. All joints in face layers staggered with joints in base layer. Joints of each base layer offset with joints of base layer on opposite side.



- 3/4" PLYWOOD INSULATION
- 1/2" AC GYPSUM BOARD
- 2" X 4" STUDS @ 16" O.C.
- 1/2" X 4" GYPSUM BOARD



ADA REQUIREMENTS
SCALE: 1/4" = 1'-0"



TOTAL OF 8100 SQ-FT OF RENTAL SPACE
CAPACITY = 203 Children

BUILDING WILL BE FULLY SPRINKLERED

FLOOR PLANS FOR DAYCARE

COMMERCIAL BUILDING

6053-59 WOODLAND AVENUE PHILA. PA
OWNER:

REVISIONS:

DATE	DESCRIPTION

THE CONTRACTOR IS RESPONSIBLE FOR CORRECTING AND CONSULTING WITH THE ARCHITECT AND ENGINEER FOR ANY CHANGES TO THE DRAWINGS. THE CONTRACTOR SHALL BE RESPONSIBLE FOR OBTAINING ALL NECESSARY PERMITS AND APPROVALS FROM THE LOCAL DEPARTMENT OF PLANNING AND ZONING. THE CONTRACTOR SHALL BE RESPONSIBLE FOR OBTAINING ALL NECESSARY PERMITS AND APPROVALS FROM THE LOCAL DEPARTMENT OF PLANNING AND ZONING. THE CONTRACTOR SHALL BE RESPONSIBLE FOR OBTAINING ALL NECESSARY PERMITS AND APPROVALS FROM THE LOCAL DEPARTMENT OF PLANNING AND ZONING.

SCALE: 1/4" = 1'-0"

Gore Drafting, Inc.
 design and construction planning services
 PO BOX 27591
 PHILADELPHIA, PA 19118
 tel: 267-259-1420
 fax: 215-689-4101
 rdrafting@aol.com

DRAWN BY: R.A.G. DATE: JUNE 23, 2011 PROJECT NUMBER: 20110623-1

DWG. NO.:
A1
 SHEET 1 OF 2